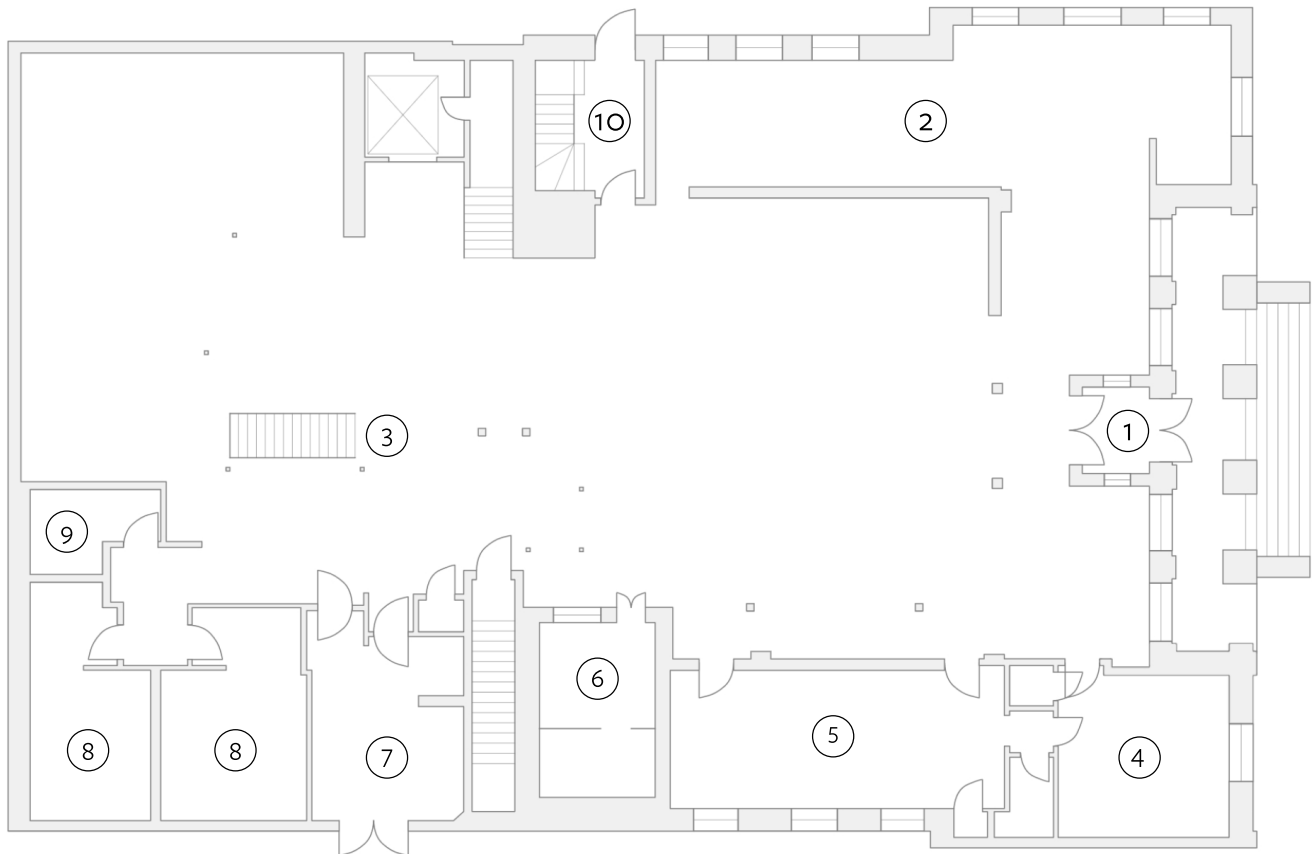


# Floorplan

## Lower Level at the Historic Post Office



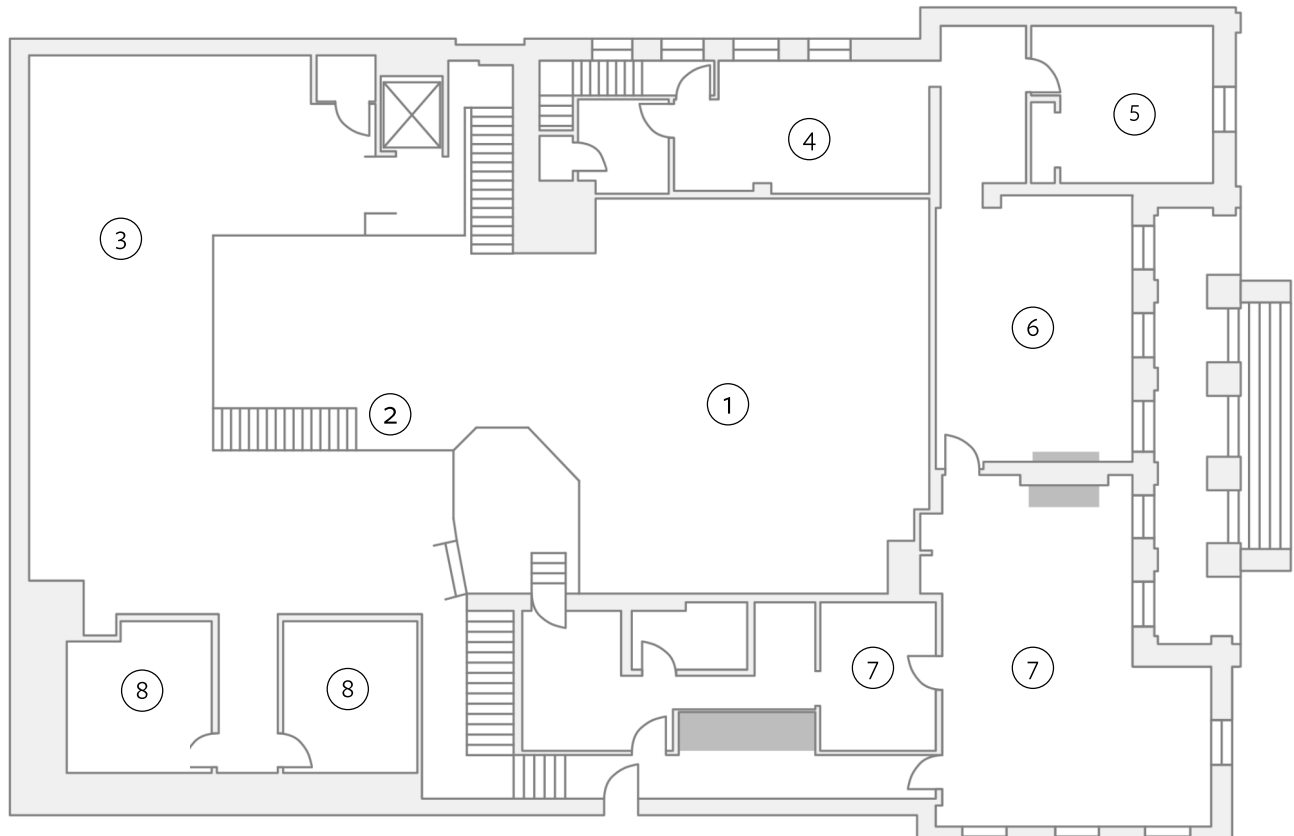
### KEY

- |                         |                                   |
|-------------------------|-----------------------------------|
| ① Front Entrance        | ⑥ Historic Vault/Photo Booth Area |
| ② Brick Hall            | ⑦ Full Service Warming Kitchen    |
| ③ Stairs To Mezzanine   | ⑧ Restrooms                       |
| ④ HPO Staff Only Office | ⑨ Family Restroom                 |
| ⑤ Buffet/Storage Room   | ⑩ Side Entrance                   |



# Floorplan

## Upper Level at the Historic Post Office



### KEY

- |  |  |
|--|--|
| ① Overlooking Banquet Hall                       | ⑤ HPO Staff Only Closet                        |
| ② Stairs To Lower Level                          | ⑥ Lounge                                       |
| ③ Mezzanine                                      | ⑦ Dressing Suite 2<br>(+ Full Bath and Closet) |
| ④ Dressing Suite 1<br>(+ Full Bath, and Kitchen) | ⑧ Restrooms                                    |

